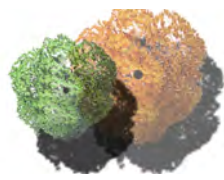






LEGEND



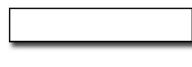
Proposed trees
Refer to Indicative Plant Schedule




Proposed shrubs & groundcovers
Refer to Indicative Plant Schedule




Main pedestrian walkway




Off form concrete seating wall



Existing trees to be removed
TBC Burwood Tree Management Officer
Tree numbers in correlation with arborist report
NB: For detailed existing tree information, Refer project arborist report by Meredith Gibbs
(13 Nov 2012 version 1, contact 0407103895)



Street lighting as per
Burwood Council



Bin enclosure
240L EMERDYN Cronulla
Bin Enclosure

INDICATIVE PLANT SELECTION



INDICATIVE PAVING MATERIALS & STREET FUNITURE



NOTES

- Paving to Burwood category 1 streetscape specification laid in a striking set out to generate interest and assist in identifying entries and pedestrian link.
- Off form concrete planters with coloured glazed brick inlay designed to provide multiple seating opportunities to plaza and future development. (Refer section H Sheet DA-1225-04)
- Opportunity for access to future development to the north.
- Off form concrete planters to be mounded to accommodate larger shade trees and ornamental native ground covers.
- Island planting and seating and potential future pedestrian link location.
- Retail seating with 2.5m width allowance.
- Emergency and utility vehicle clear access of minimum 4.5m.
- No raised planter structure within substation maintenance access zone as advised and marked on drawing.
- Metal balustrade adjoining driveway egress and directing people to crossing and pram ramp.
- Continues connection to Hornsey Street Plaza to east.
- Public domain streetscape set out to Burwood Council guidelines, Burwood Council Tree Officer direction and Public Works Elements Manual.
- All street trees to be installed to linear and linked tree pit systems (Such as demonstrated by Citygreen TM or equivalent) with Terrabond surface finish as direct by Burwood Tree Officer Joe Lilley or exact equivalent system. Belmore Street to be Eleocharis eumundii as per Tree Officer suggestion.
- Use specified Burwood Category 1 paving in strong set out to address main building entries.
- Use specified Burwood Category 1 paving in strong set out to address destinations such as potential café area.
- Low simple native planting over deep soil to be low maintenance and provide seasonal amenity.
- Potential public breakout/ café landing.
- Reinstated Heritage wall.
- Provide public rest area opportunities utilising materials from the Burwood public Domain Works Manual.
- Incorporate second row of larger street trees to buffer planting areas to enhance sense of pedestrian avenue and summer shade to western access. Conder Street to be Lophostemon confertus as per Tree Officer suggestion.
- Provide rest seating, low planted garden areas and paved and planted areas to primary western building access allow 8m set back from kerbs for street trees.
- Retail breakout space continues into Conder Street from Hornsey Street.

PUBLIC DOMAIN

INDICATIVE PLANT SCHEDULE

SYM	SPECIES	COMMON NAME	SIZE (m)	QTY	POT SIZE	SPACING
Trees						
BAI	Alphitonia excelsa	Red Ash	10 x 5	1	100L	a.s.
	Banksia integrifolia	Coast Banksia	10 x 5	3	100L	a.s.
	Caricopetalum apetalum	Coachwood	10 x 6	1	100L	a.s.
DIA	Diplazium australe	Native Tamarind	10 x 6	1	100L	a.s.
ELE	Eleocharis eumundii	Smooth-leaved Quandong	10 x 5	12	100L	a.s.
LAI	Lagerstroemia indica	Crape myrtle	10 x 6	4	100L	a.s.
LOC	Lophostemon confertus	Brush Box	10 x 8	5	100L	a.s.
TRL	Tristania laurina	Water Gum	7 x 4	7	100L	a.s.
Shrubs & Groundcovers						
	Adiantum aethiopicum	Maidenhair Fern	0.3		150mm	300mm
	Alphitonia excelsa	Native Ginger	1.5		150mm	400mm
	Alphitonia caerulea	Blueberry Ginger	1.2		150mm	300mm
	Alphitonia zeyheri	Shell Flower Ginger	1.5		150mm	600mm
	Alcantarea imperialis 'Rubra'	Giant Bromeliad	1		5L	700mm
	Anemone japonica	Japanese Wind Flower	0.5		150mm	300mm
	Aphanopetalum resinosum	Gum Vine	0.75		150mm	300mm
	Asplenium australasicum	Birds Nest Fern	1		200mm	500mm
	Banksia robur	Swamp Banksia	2 - 3		150mm	Specimens
	Blechnum 'Silver Lady'	Silver Lady	0.5		150mm	400mm
	Calathea zebrina	Zebra Plant	0.5		200mm	400mm
	Carex appressa	Shortleaf Tall Sedge	0.75		150mm	300mm
	Convolvulus 'White Gladys'	Silver Bush	0.5		tube	400mm
	Cordyline petiolaris	Broad Leaved Palm Lily	1.5		200mm	500mm
	Crinum pedunculatum	Swamp Lily	1		200mm	500mm
	Cleranthe spp.	Foliage Plant	0.6		25L	400mm
	Cyathea cooperi	Lacy Tree Fern	3 - 5		25L	a.s.
	Daniella 'Silver Streak'	Silver Streak Flax Lily	0.5		200mm	400mm
	Dichondra argentea 'Silver Dollar'	Silver Dollar	0.25		150mm	150mm
	Helmholtzia glaberrima	Stream Lily	1		200mm	500mm
	Hibbertia scandens	Guinea Flower / Snake Vine	0.5		200mm	400mm
	Hymenocallis speciosa	Beach Spider Lily	0.75		200mm	400mm
	Isoplepis nodosa	Knobby Club Rush	0.8		tube	400mm
	Juncus sp.	Juncus sp.	0.8		tube	400mm
	Kennedia prostrata	Running Postman	0.35		50mm	300mm
	Liriope muscari 'Just Right'	Just Right Lily Turf	0.5		150mm	250mm
	Lomandra 'Nyalia'	Lomandra 'Nyalia'	1		tube	400mm
	Lomandra 'hystrix'	Slender Mat Rush	1		150mm	400mm
	Lomandra 'Tanika'	Lomandra 'Tanika'	0.6		200mm	400mm
	Macraea communis	Burrowing	1		25L	a.s.
	Metrosideros 'Fiji Fire'	Metrosideros Fiji Fire	1		25L	400mm
	Peristemon alpestris 'Purple Lea'	Swamp Foxtail Grass Purple Lea	0.7		150mm	500mm
	Philodendron 'Xanadu'	Xanadu	0.7		200mm	300mm
	Phormium tenax	New Zealand Flax	1.5		25L	400mm
	Poa labillardieri var. labillardieri	Tussock Grass	0.7		200mm	600mm
	Strelitzia reginae	Leathery Bird of Paradise	1.5		5L	600mm
	Syzygium 'Tiny Tree'	Tiny Tree Lilly Pilly	1.5		5L	1m
	Viburnum suspensum	Sandankwa Viburnum	2 - 3		45L	1m
	Viburnum odoratissimum	Sweet Viburnum	2 - 3		45L	1.2m
	Viola hederacea	Native Violet	0.25		tube	200mm
	Westringia fruticosa 'Zena'	Coast Rosemary	1.5		300mm	600mm
	Zieria sp.	Carpet Star	0.5		150mm	300mm



Sturt Noble
Associates

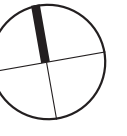
Suite 91, L5, 330 Wattle St
Ultimo NSW 2007
T. 02 9211 3744
W. www.sturt-noble.com.au
landscape architecture
environmental & urban design

PROJECT
BURWOOD GRAND

CLIENT
KAPAU HOLDINGS PTY LTD

DRAWING
**LANDSCAPE CONCEPT PLAN -
PUBLIC DOMAIN**

DRAWING No. **DA-1225-01** ISSUE **F** DRAWN **bx** DATE **17.12.2015**



0 2 4 8 12m
Scale 1:250@A1
Scale 1:500@A3

ACN: 164 245 514 ABN: 99 164 245 514
THIS DRAWING SHOULD BE READ IN CONJUNCTION WITH ALL RELEVANT CONTRACTS,
SPECIFICATIONS, REPORTS AND DRAWINGS. COPYRIGHT OF THIS DRAWING IS VESTED IN
STURT NOBLE ASSOCIATES PTY LTD.



LEGEND

Proposed trees
Refer to Indicative Plant Schedule

Proposed shrubs & groundcovers
Refer to Indicative Plant Schedule

Unit paving to courtyards
Refer to architects DWG

Timber topped off form concrete benches

Lawn

Crushed recycled inorganic materials

Main pedestrian walkway

Off form concrete seating wall

INDICATIVE MATERIALS

Concrete stairs

Blue glaze

Bright colour

Creative play

Creative play

Interactive WSUD

Rain garden

Recycled brick

Seating opportunities

Sleeper landing

Conc.seating with timber finish

INDICATIVE PLANT SELECTION

Alpinia caerulea 'Atherton'

Angophora costata

Banksia robur

Carex appressa

Ceratopetalum apetalum

Crinum pedunculatum

Hibbertia scandens

Kennedia prostrata

Livistona australis

Pennisetum 'Purple Lea'

Tristania laurina

NOTES

- Lush low maintenance planting to raised beds form part of the boundary buffering to private courtyards.
- Communal BBQ areas to northern end of communal passive recreational areas. Including paved landings, BBQ, sustainably sourced timber shelter structure, picnic tables and timber topped platform seating.
- Additional buffering to private courtyards formed along the edge of the private communal spaces via low off form concrete seating planter walls that retain raised beds of groundcovers and dense lush shrubs.
- Larger feature trees chosen for their seasonal show, canopy shelter and amenity are located in minimum 900mm depth of soil incorporated into 1: 20 accessible slope.
- Multiple small group and individual opportunity spaces are located across the sites.
- Timber topped off form concrete benches with inlaid colourful glazed brick forms larger group social area.
- Larger shelter tree located in mounded soil from adjoining upturned bench structure.
- Equal access paved ramp at 1: 20 located within lawn area and garden bed provides connection to Belmore Street and Temple facilities for residents.
- Areas to immediate north of Temple are open to general public and potential café space with an off form concrete seating wall and buffer garden bed to the northern edge concealing private communal boundary fence.
- Contrasting paving types to match public domain paver type but laid to reinforce special set outs and generate interest and way finding.
- Contrasting paving continues through entry areas with lush low maintenance planting to create a continuous outdoor experience from street.
- Large blocks of paving colour contrast spill out into streetscape layout to signify a main entry as you navigate the footpath.
- Crushed recycled inorganic materials are utilised to generate interest in a ground pattern as viewed from all units above.
- Bridge links to existing library.

PRIVATE OPEN SPACE
INDICATIVE PLANT SCHEDULE

SPECIES	COMMON NAME	POT SIZE	SPACING
Trees			
<i>Alphitonia excelsa</i>	Red Ash	100L	a.s.
<i>Banksia integrifolia</i>	Coast Banksia	100L	a.s.
<i>Ceratopetalum apetalum</i>	Coachwood	100L	a.s.
<i>Diploglottis australis</i>	Native Tamarind	100L	a.s.
<i>Eleocharis acicularis</i>	Smooth-leaved Quandong	100L	a.s.
<i>Lagerstroemia indica</i>	Crape myrtl	100L	a.s.
<i>Lophostemon confertus</i>	Brush Gum	100L	a.s.
<i>Tristania laurina</i>	Water Gum	100L	a.s.
Shrubs & Groundcovers			
<i>Adiantum aethiopicum</i>	Maidenhair Fern	150mm	300mm
<i>Alpinia caerulea</i>	Native Ginger	150mm	400mm
<i>Alpinia caerulea</i> 'Atherton'	Blueberry Ginger	150mm	300mm
<i>Alpinia zerumbet</i>	Shell Flower Ginger	150mm	600mm
<i>Alcantarea imperialis</i> 'Rubra'	Giant Bromeliad	5L	700mm
<i>Anemone japonica</i>	Japanese Wind Flower	150mm	300mm
<i>Aphanopetalum resinosum</i>	Gum Vine	150mm	300mm
<i>Asplenium australasicum</i>	Birds Nest Fern	200mm	500mm
<i>Banksia robur</i>	Swamp Banksia	150mm	Specimens
<i>Blechnum</i> 'Silver Lady'	Silver Lady	150mm	400mm
<i>Calathea zebrina</i>	Zebra Plant	200mm	400mm
<i>Carex appressa</i>	Shortleaf Tall Sedge	150mm	300mm
<i>Convolvulus</i> 'White Gladys'	Silver Bush	tube	400mm
<i>Cordyline petiolaris</i>	Broad Leaved Palm Lily	200mm	500mm
<i>Crinum pedunculatum</i>	Swamp lily	200mm	500mm
<i>Cleranthe</i> spp.	Foliage Plant	25L	400mm
<i>Cyathea cooperi</i>	Lacy Tree Fern	25L	a.s.
<i>Dianella</i> 'Silver Streak'	Silver Streak Flax Lily	200mm	400mm
<i>Dichondra argentea</i> 'Silver Dollar'	Silver Dollar	150mm	150mm
<i>Helmholtzia glaberrima</i>	Stream Lily	200mm	500mm
<i>Hibbertia scandens</i>	Guinea Flower / Snake Vine	200mm	400mm
<i>Hymenocallis speciosa</i>	Beach Spider Lily	200mm	400mm
<i>Isoplexis nodosa</i>	Knobby Club Rush	tube	400mm
<i>Juncus ustulatus</i>	Juncus sp.	tube	400mm
<i>Kennedia prostrata</i>	Running Postman	50mm	300mm
<i>Liriope muscari</i> 'Just Right'	Just Right Lily Turf	150mm	250mm
<i>Lomandra 'Nyalia'</i>	Lomandra Nyalia	tube	400mm
<i>Lomandra hystrix</i>	Slender Mat Rush	150mm	400mm
<i>Lomandra 'Tanika'</i>	Lomandra Tanika	200mm	400mm
<i>Macrozamia communis</i>	Burrawang	25L	a.s.
<i>Metrosideros</i> 'Fiji Fire'	Metrosideros Fiji Fire	25L	400mm
<i>Pennisetum alopecuroides</i> 'Purple Lea'	Swamp Foxtail Grass Purple Lea	150mm	500mm
<i>Philodendron 'Xanadu'</i>	Xanadu	200mm	300mm
<i>Phormium tenax</i>	New Zealand Flax	25L	400mm
<i>Poa labillardieri</i> var. <i>labillardieri</i>	Tussock Grass	200mm	600mm
<i>Strelitzia juncea</i>	Leafless Bird of Paradise	5L	600mm
<i>Syzygium 'Tiny Trev'</i>	Tiny Trev Lilly Pilly	5L	1m
<i>Viburnum suspensum</i>	Sandenkiea Viburnum	45L	1m
<i>Viburnum odoratissimum</i>	Sweet Viburnum	45L	1.2m
<i>Viola hederacea</i>	Native Violet	tube	200mm
<i>Westringia fruticosa</i> 'Zenia'	Coast Rosemary	300mm	600mm
<i>Zieria</i> sp.	Carpet Star	150mm	300mm

Suite 91, L5, 330 Wattle St
Ultimo NSW 2007
T. 02 9211 3744
W. www.sturt-noble.com.au
landscape architecture
environmental & urban design

PROJECT
BURWOOD GRAND

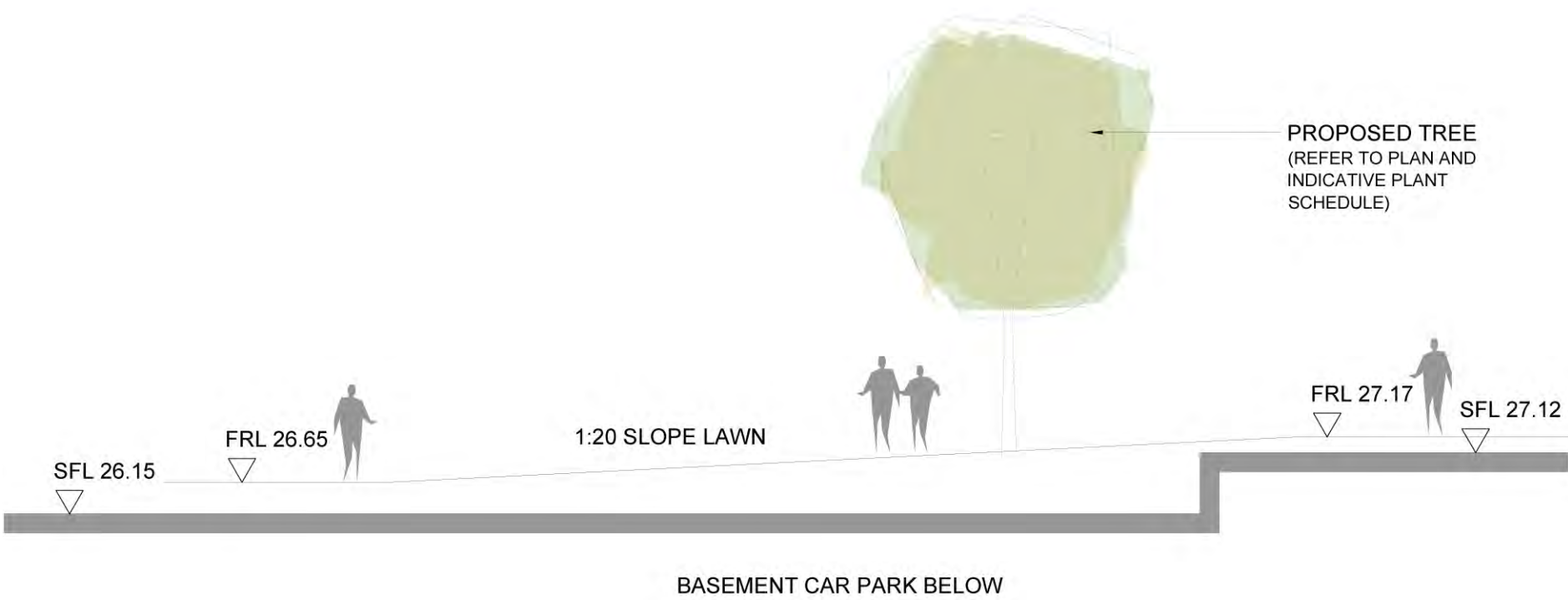
CLIENT
KAPAU HOLDINGS PTY LTD

DRAWING
**LANDSCAPE CONCEPT PLAN -
PRIVATE OPEN SPACE**

DRAWING No. **DA-1225-02** ISSUE **G** DRAWN **bx** DATE **17.12.2015**

Scale 1:250@A1
Scale 1:500@A3

ACN: 164 245 514
THIS DRAWING SHOULD BE READ IN CONJUNCTION WITH ALL RELEVANT CONTRACTS, SPECIFICATIONS, REPORTS AND DRAWINGS. COPYRIGHT OF THIS DRAWINGS IS VESTED IN STURT NOBLE ASSOCIATES PTY LTD.



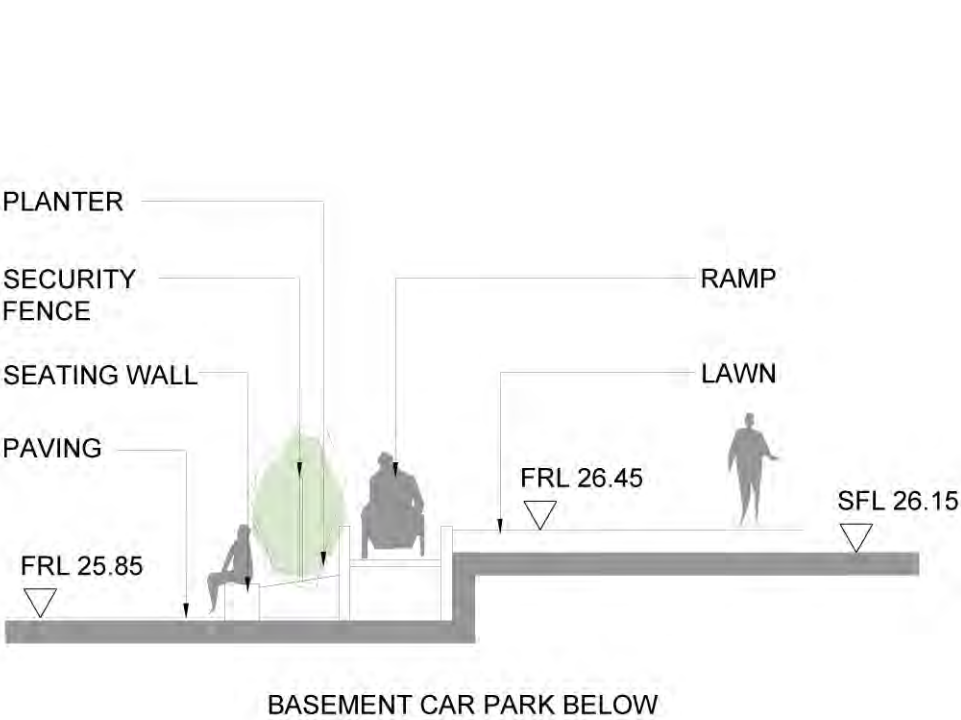
SECTION A-A



SECTION B-B



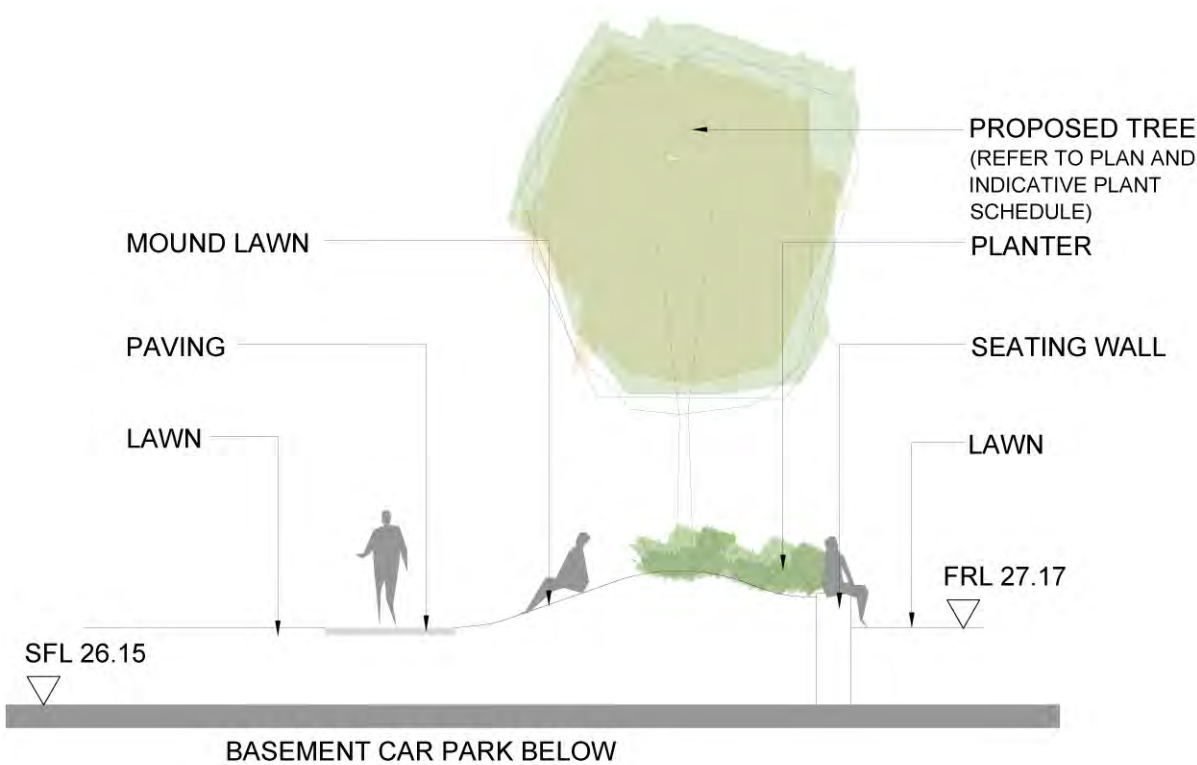
SECTION C-C



SECTION D-D



SECTION E-E



SECTION F-F



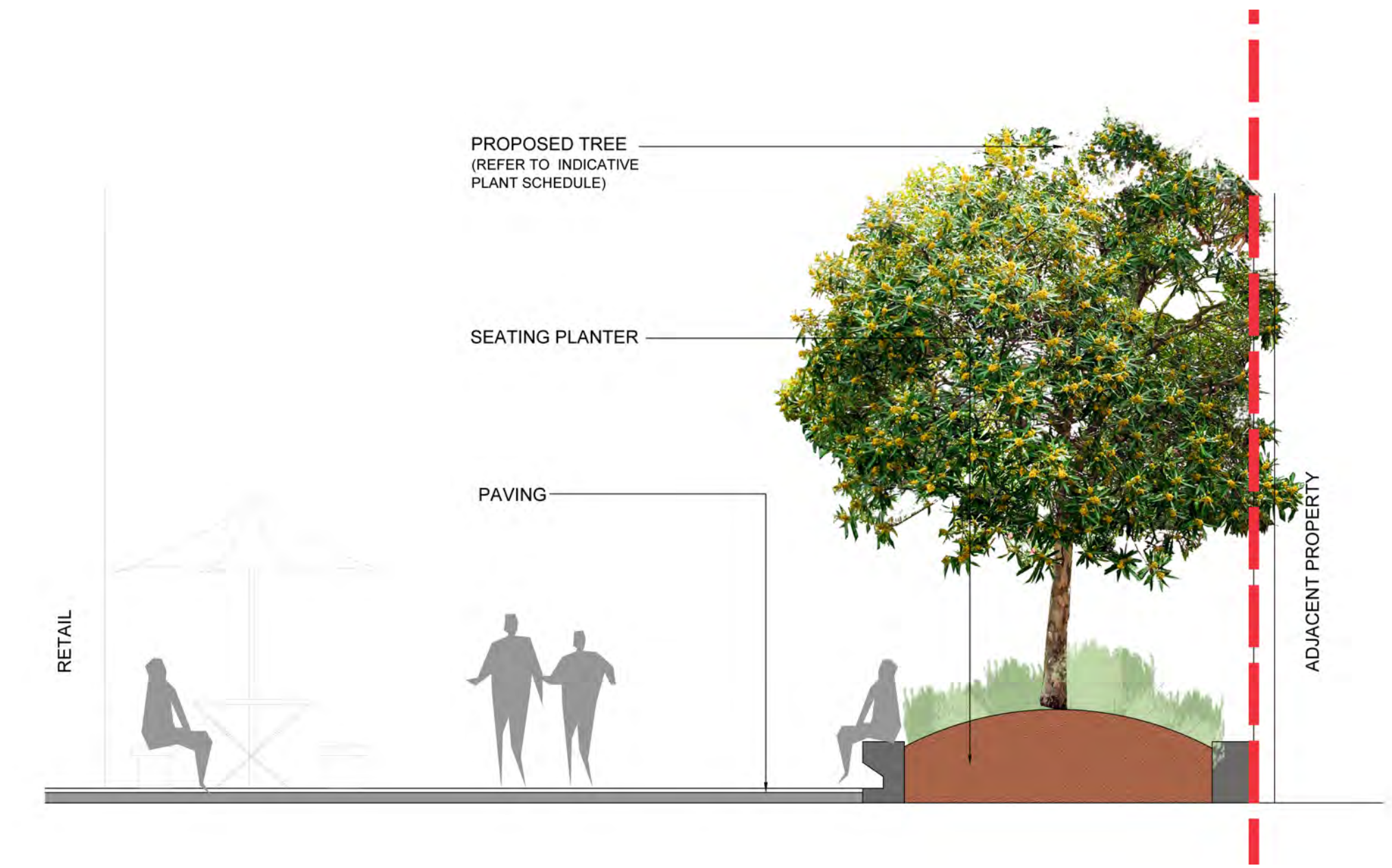
SECTION G-G



Lagerstroemia indica



Indicative paving banding



SECTION H-H 1:100@A3

HORNSEY STREET PLAZA INDICATIVE PLANT SCHEDULE

SYM	SPECIES	COMMON NAME	SIZE (m)	QTY	POT SIZE	SPACING
Trees						
BAI	Banksia integrifolia	Coast Banksia	10 x 5	3	100L	a.s.
LOC	Lagerstroemia indica	Crepe Myrtle	10 x 8	5	100L	a.s.
TRL	Tristania laurina	Water Gum	7 x 4	7	100L	a.s.
Shrubs & Groundcovers						
	Alcantarea imperialis 'Rubra'	Giant Bromeliad	1		5L	700mm
	Blechnum 'Silver Lady'	Silver Lady	0.5		150mm	400mm
	Carex appressa	Shortleaf Tall Sedge	0.75		150mm	300mm
	Convolvulus 'White Gladys'	Silver Bush	0.5		tube	400mm
	Crinum pedunculatum	Swamp lily	1		200mm	500mm
	Ctenanthe spp.	Foliage Plant	0.6		25L	400mm
	Dianella 'Silver Streak'	Silver Streak Flax Lily	0.5		200mm	400mm
	Dichondra argentea 'Silver Dollar'	Silver Dollar	0.25		150mm	150mm
	Helmholtzia glaberrima	Stream Lily	1		200mm	500mm
	Hymenocallis speciosa	Beach Spider Lily			200mm	400mm
	Kennedia prostrata	Running Postman			50mm	300mm
	Liriope muscari 'Just Right'	Just Right Lily Turf	0.5		150mm	250mm
	Philodendron 'Xanadu'	Xanadu	0.7		200mm	300mm
	Phormium tenax	New Zealand Flax	1.5		25L	400mm
	Poa labillardieri var. labillardieri	Tussock Grass	0.7		200mm	600mm
	Strelitzia juncea	Leafless Bird of Paradise	1.5		5L	600mm
	Viola hederacea	Native Violet	0.25		tube	200mm
	Westringia fruticosa 'Zena'	Coast Rosemary	1.5		300mm	600mm

INDICATIVE PLAZA REFERENCE IMAGES



Tristania laurina



Banksia Integrifolia



Hymenocallis speciosa



Helmholtzia glaberrima



Viola hederacea



Kennedia prostrata



Blue glaze



Bright colour



Concrete seating planters